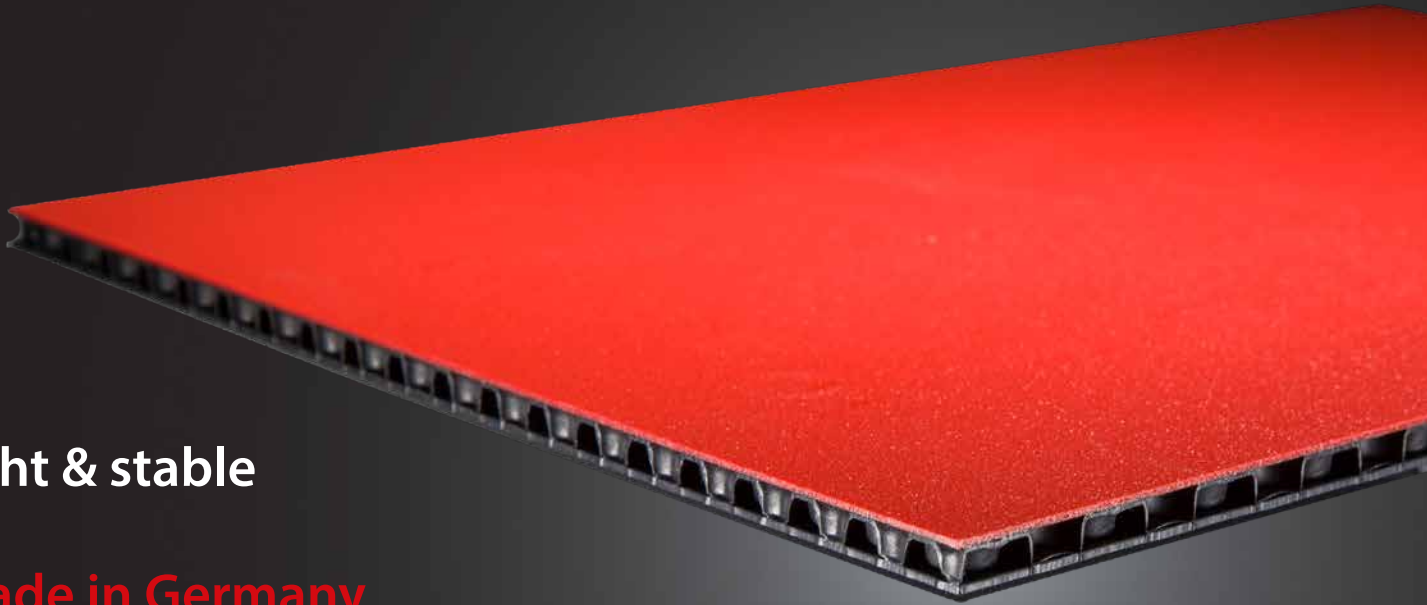


Con-Pearl[®] the original

The alternative to wood, cardboard and steel!



light & stable

made in Germany

100 % recyclable innovative

corrosion- & rot resistant weather resistant

RAL/Pantone colours chemical resistant

easy finishing durable & sustainable

no mould individually printable

Low weight, high stability = Con-Pearl[®]

Lightweight boards made of Con-Pearl[®] consist of three polypropylene layers. The middle layer obtains its special structure by thermo forming. Lamination to the outer layers results in a very light and stable trilaminate structure. For optimum protection from dirt, we offer Con-Pearl[®] with closed edges.

Con-Pearl[®] lightweight boards

Low weight, high stability and sustainability - lightweight performance is our standard!

main application areas:

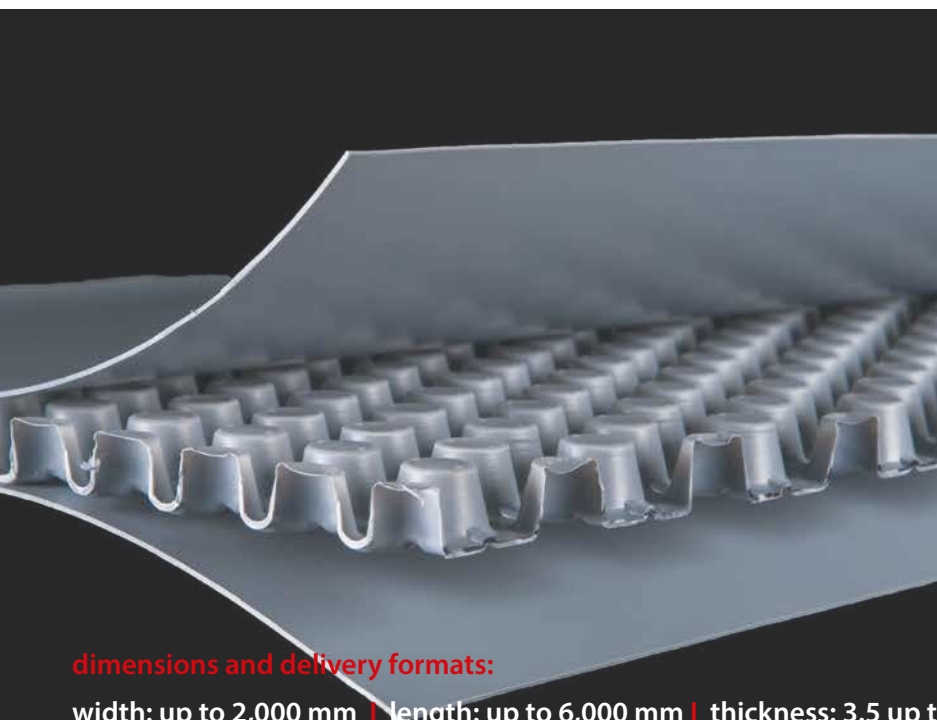
Con-Pearl[®] automotive

- van floorings & van liners
- headliners & wheelhouse covers
- spare wheel cover / trunk floors
- interior for caravans



Con-Pearl[®] packaging

- reusable packaging, pallet containers
- plastic pallet sleeves for all conventional pallets
- dividers
- individual packaging solutions



standard boards

name	thickness	weight
CP3 750 grey	3.5 mm	750 g/m ²
CP3 1,000 black	3.7 mm	1,000 g/m ²
CP5 1,000 grey	4.8 mm	1,000 g/m ²
CP5 1,500 grey	5.2 mm	1,500 g/m ²
CP5 2,000 grey	5.7 mm	2,000 g/m ²
CP5 2,500 grey	6.2 mm	2,500 g/m ²
CP10 3,000 grey	9.9 mm	3,000 g/m ²

size (l) 2,300 x (w) 1,600 mm

dimensions and delivery formats:

width: up to 2,000 mm | length: up to 6,000 mm | thickness: 3.5 up to 11 mm | weight: from 750 g/m² to 4,000 g/m²